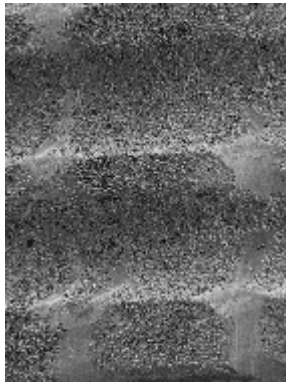
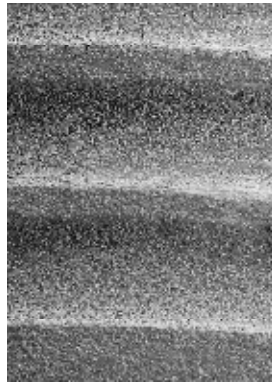


Effects of Rotating Titanium Debridement Brushes on the Surface Structure of Dental Implants

Dirk Duddeck et al. Presented at EAO 2011



Implant cleaned with curette



Implant cleaned with titanium brush



Implant and titanium brush

- ❖ **Poster presentation**
- ❖ **Indication: Debridement of implants**
- ❖ **Aim: SEM analysis of topographic effects of a rotating brush compared to a curette**
- ❖ **Results**
*Rotating devices seem to be more efficient with traces of gentle surface planing
Areas left untreated by the curette clearly visible*
- ❖ **Conclusion**
Shortening of treatment time with minor impact on the implant structure when using the rotating brush